



Hoists and trolleys

Treat 'em rough, they can stand it!

Atlas Copco air hoists will not overheat, even during intensive operations at maximum load. Outstanding inching characteristics give precise load control. Complementing the hoists, Atlas Copco trolleys are supplied as manual or motor-driven units. Both products are certified for use in hazardous environments.

| Contents | Page |
|------------------|-------------|
| Air hoists..... | 266 |
| Trolleys..... | 267 |
| Accessories..... | 268 |

AIR HOISTS

Explosion proof for safe operation

Our air hoists and trolleys are ideal for lift applications in hazardous environments, where sparks or high outer temperatures could ignite explosive gases, vapour or dust. All are certified Explosion-proof, to stringent European standards, in compliance with the EU ATEX Directive. Available in six sizes, they offer lift capacities from 200 kg to 5 tons. All hoists and trolleys are certified to level Ex II 2G T5 II B D100°C. The SR types are even certified to Ex II 2G T5 IIC D100°C.

- **Precise and stepless speed control** – Through effective stepless control with excellent creep characteristics the LLA air hoists are fast to use over the entire speed range.
- **Heavy duty performance** – These air hoists can continually operate at maximum load with frequent start and stop cycles without risk of damage.
- **Elimination of load sink** – The patented brake mechanism eliminates loadsink when starting lifting, and automatically holds the load if the air supply fails.
- **Compact size** – The small dimensions make the LLA hoists easy to install, even in the most restricted space. Also the low weight means the hoists can easily be moved for maintenance or relocation purposes.



| Model | Max lifting capacity | | Lifting speed at full load | | Chain strands | Weight excl chain | | Chain weight | | Required chain-length metre | Sound level dB(A) | Air consumption | | Hose dia | | Hose fitting thread | Ordering No. |
|------------------------------|----------------------|------|----------------------------|--------|---------------|-------------------|-------|--------------|-------|-----------------------------|-------------------|-----------------|-----|----------|-----|---------------------|---------------|
| | kg | ton | m/min | ft/min | | kg | lb | kg/m | lb/ft | | | l/s | cfm | mm | in | | |
| LLA200 EX | 200 | 0.2 | 20.2 | 66.3 | 1 | 12.7 | 28.0 | 0.9 | 0.6 | Lifting height + 0.5 | 84 | 38 | 81 | 12.5 | 1/2 | 1/2 | 8451 1540 02* |
| LLA250 EX | 250 | 0.25 | 18.6 | 61.0 | 1 | 12.7 | 28.0 | 0.9 | 0.6 | Lifting height + 0.5 | 84 | 37 | 78 | 12.5 | 1/2 | 1/2 | 8451 1540 10* |
| LLA500 EX | 500 | 0.5 | 12.6 | 41.3 | 1 | 12.7 | 28.0 | 0.9 | 0.6 | Lifting height + 0.5 | 83 | 38 | 81 | 12.5 | 1/2 | 1/2 | 8451 1540 28* |
| LLA1000 U EX ^a | 1000 | 1.0 | 6.3 | 20.7 | 2 | 14.5 | 32.0 | 0.9 | 0.6 | 2 x lifting height + 0.5 | 83 | 38 | 81 | 12.5 | 1/2 | 1/2 | 8451 1540 69* |
| LLA1000 EX ^b | 1000 | 1.0 | 6.3 | 20.7 | 2 | 14.5 | 32.0 | 0.9 | 0.6 | 2 x lifting height + 0.5 | 83 | 38 | 81 | 12.5 | 1/2 | 1/2 | 8451 1540 36* |
| LLA2500 EX ^b | 2500 | 2.5 | 3.2 | 10.5 | 1 | 42.5 | 93.7 | 2.9 | 1.9 | Lifting height + 0.6 | 79 | 40 | 85 | 20.0 | 3/4 | 1/2 | 8451 1540 44* |
| LLA5000 EX ^b | 5000 | 5.0 | 1.6 | 5.2 | 2 | 65.5 | 144.4 | 2.9 | 1.9 | 2 x lifting height + 0.9 | 79 | 40 | 85 | 20.0 | 3/4 | 1/2 | 8451 1540 51* |
| Spark-resistant model | | | | | | | | | | | | | | | | | |
| LLA250-SR | 250 | 0.25 | 17.0 | 55.8 | 1 | 12.7 | 28.0 | 0.9 | 0.6 | Lifting height + 0.5 | 83 | 45 | 95 | 12.5 | 1/2 | 1/2 | 8451 1510 08 |
| LLA500-SR | 500 | 0.5 | 8.5 | 27.9 | 2 | 14.5 | 32.0 | 0.9 | 0.6 | 2 x lifting height + 0.5 | 83 | 45 | 95 | 12.5 | 1/2 | 1/2 | 8451 1510 16 |
| LLA1250-SR | 1250 | 1.25 | 5.0 | 16.4 | 1 | 42.5 | 93.7 | 2.9 | 1.9 | Lifting height + 0.6 | 79 | 50 | 106 | 20.0 | 3/4 | 1/2 | 8451 1510 24 |

^a Without overload protection device, not to be used within the European Community.

^b Overload protection device included as standard.

* Available directly from stock.

NOTE: The load chain and pull chain must be ordered separately.

DIMENSIONS

| Model | A | | B | | C | | D | |
|-----------------------|-----|------|-----|-----|-----|------|----|-----|
| | mm | in | mm | in | mm | in | mm | in |
| LLA200 / 250 EX | 377 | 14.8 | 122 | 4.8 | 390 | 15.4 | 29 | 1.1 |
| LLA500 EX / 250-SR | 377 | 14.8 | 122 | 4.8 | 390 | 15.4 | 29 | 1.1 |
| LLA1000 U EX / 500-SR | 445 | 17.5 | 122 | 4.8 | 390 | 15.4 | 29 | 1.1 |
| LLA1000 EX | 495 | 19.4 | 122 | 4.8 | 390 | 15.4 | 29 | 1.1 |
| LLA2500 EX / 1250-SR | 575 | 22.6 | 212 | 8.3 | 546 | 21.5 | 50 | 2.0 |
| LLA5000 EX | 785 | 30.9 | 249 | 9.8 | 546 | 21.5 | 60 | 2.4 |

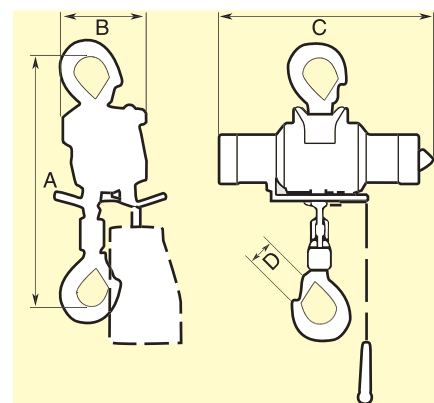
ACCESSORIES INCLUDED

Wooden handle for pull chain hose nipple
BSP 1/2"

Suspension hook and load hook

OPTIONAL ACCESSORIES

Page 268



TROLLEYS

Atlas Copco trolleys are available in 3 sizes, for maximum loads of 1, 2.5 and 5 tonnes. All models can be offered with air motor drive. The 1 tonne trolley includes motor without pedant control. The 2.5 and 5 tonne includes handle for control chain (control chain must be ordered separately). The 1 and 2.5 tonne trolleys are also available in manual versions.

Simple installation

The trolleys are easy to install. The wheels are designed so that the trolley is equally suitable on both parallel and tapered I-beam section beams. The distance between the wheels is easily adjusted to suit the beam width by turning the suspension yoke.



| Model | Max capacity | | Max speed with full load | | Air consumption | | Beam width standard | | Beam width optional | | Curve radius min | | Weight | | Ordering No. |
|----------------------------|--------------|-----|--------------------------|--------|-----------------|------|---------------------|----------|---------------------|----------|------------------|----|--------|-----|--------------|
| | kg | ton | m/min | ft/min | l/s | cfm | mm | in | mm | in | mm | in | kg | lb | |
| Manual | | | | | | | | | | | | | | | |
| TLT1000 | 1000 | 1 | - | - | - | - | 50-165 | 2 - 6.5 | 134-265 | 5.3-10.4 | 1250 | 50 | 9.4 | 21 | 8451 1520 06 |
| TLT2500 | 2500 | 2.5 | - | - | - | - | 136-334 | 5.2-13.1 | 60-172 | 2.3- 6.7 | 2200 | 88 | 32.0 | 70 | 8451 1520 55 |
| LLT1000-SR | 1000 | 1 | - | - | - | - | 54-173 | 2.1- 6.8 | 140-273 | 5.5-10.7 | 1200 | 47 | 9.5 | 21 | 8451 1500 00 |
| LLT2500-SR | 2500 | 2.5 | - | - | - | - | 133-332 | 5.2-13.1 | 58-170 | 2.3- 6.7 | 1400 | 55 | 24.5 | 54 | 8451 1500 26 |
| Motor-driven | | | | | | | | | | | | | | | |
| TLT1000M ^a | 1000 | 1 | 14.0 | 45.9 | 4.0 | 8.5 | 50-155 | 2 - 6.1 | 134-255 | 5.3-10.0 | 1250 | 50 | 11.0 | 24 | 8451 1520 14 |
| LLT2500M ^b | 2500 | 2.5 | 17.8 | 58.4 | 42.0 | 89.0 | 133-306 | 5.2-12.0 | 58-144 | 2.4- 5.7 | 1400 | 55 | 41.0 | 90 | 8451 1491 19 |
| LLT5000M ^b | 5000 | 5 | 16.2 | 53.1 | 42.0 | 89.0 | 145-300 | 5.7-11.8 | 70-148 | 2.8- 5.8 | 1800 | 71 | 91.0 | 200 | 8451 1491 27 |
| LLT1000(M)-SR ^a | 1000 | 1 | 14.0 | 45.9 | 4.5 | 9.5 | 54-153 | 2.1- 6.0 | 140-253 | 5.5-10.0 | 1200 | 47 | 11.0 | 24 | 8451 1500 42 |
| LLT2500M-SR ^b | 2500 | 2.5 | 17.8 | 58.4 | 42.0 | 89.0 | 133-306 | 5.2-12.0 | 58-144 | 2.3- 5.7 | 1400 | 55 | 41.0 | 90 | 8451 1500 34 |

^a Pendant control must be ordered separately.

^b Includes handle for control chain. Control chain must be ordered separately.

Sound level: TLT1000M and LLT1000(M) = 85 dB
LLT2500M and LLT5000M = 81 dB

Performance figures are at 6 bar working pressure.

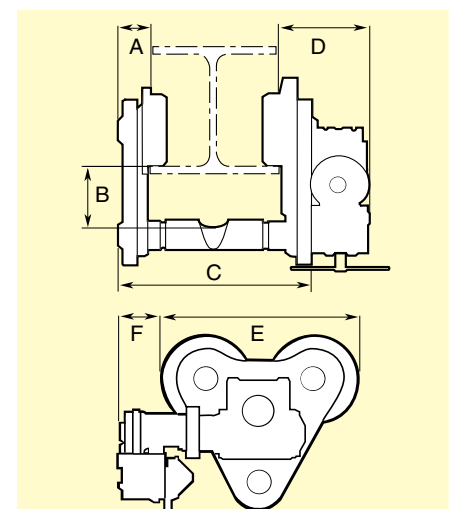
Motor-driven trolleys have 1/2" BSP air connection.

12.5 mm (1/2") hose size recommended for LLT1000M, 20 mm for LLT2500M and 5000M.

NOTE: Suspension yoke for optional beam width must be ordered separately. See page 268.

DIMENSIONS

| Model | A | | B | | C standard | | C (opt) | | D | | E | | F | |
|---------------------|------|-----|-----|-----|------------|------|---------|------|-----|-----|-----|------|-----|-----|
| | mm | in | mm | in | mm | in | mm | in | mm | in | mm | in | mm | in |
| Manual | | | | | | | | | | | | | | |
| TLT1000 | 22.0 | 0.9 | 52 | 2.0 | 212 | 8.3 | 312 | 12.2 | - | - | 264 | 10.4 | - | - |
| TLT2500 | 37.0 | 1.5 | 75 | 2.9 | 400 | 15.7 | 238 | 9.4 | - | - | 370 | 12.8 | - | - |
| LLT1000-SR | 23.5 | 0.9 | 55 | 2.2 | 212 | 8.3 | 312 | 12.3 | - | - | 250 | 9.8 | - | - |
| TLT2500-SR | 37.0 | 1.5 | 57 | 2.2 | 400 | 15.7 | 238 | 9.4 | - | - | 364 | 14.3 | - | - |
| Motor-driven | | | | | | | | | | | | | | |
| TLT1000M | 22.0 | 0.9 | 52 | 2.0 | 212 | 8.3 | 312 | 12.2 | 224 | 8.8 | 264 | 10.4 | - | - |
| LLT1000(M)-SR | 23.5 | 0.9 | 55 | 2.2 | 212 | 8.3 | 312 | 12.3 | 225 | 8.9 | 250 | 9.8 | - | - |
| LLT2500M/-SR | 39.0 | 1.5 | 82 | 3.2 | 400 | 15.7 | 238 | 9.4 | 161 | 6.3 | 364 | 12.8 | 126 | 5.0 |
| LLT5000M | 61.0 | 2.4 | 118 | 4.6 | 424 | 16.7 | 282 | 11.1 | 181 | 7.1 | 422 | 16.6 | 79 | 3.1 |



ACCESSORIES INCLUDED

LLT2500M/5000M

Wooden handle for pull chain

OPTIONAL ACCESSORIES

Page 268

ACCESSORIES FOR HOISTS AND TROLLEYS

OPTIONAL ACCESSORIES. Hoists

| Designation | Ordering No. LLA200/250/500/1000 EX | Ordering No. LLA2500/5000 EX | Ordering No. LLA250/500-SR | Ordering No. LLA1250-SR |
|---|--|---------------------------------|-------------------------------|----------------------------|
| Load chain, zinc plated, per m | 4310 2293 00 | 4310 2296 00 | | |
| Load chain, stainless steel, per m | | | 4310 2211 00 | 4310 2219 00 |
| Control chain, zinc plated, per m | 4310 0748 00 | 4310 0748 00 | | |
| Control chain, stainless steel, per m | | | 4310 2221 00 | 4310 2221 00 |
| 2 button pendant control Handle and actuators only | 4310 2261 90 | 4310 2300 90 | 4310 2261 90 | 4310 2300 90 |
| Hose set per m | 4380 0576 91 | 4380 0576 91 | 4380 0576 91 | 4380 0576 91 |
| 4 button pendant control Handle and actuators only | 4310 2263 90 | 4310 2264 90 | 4310 2263 90 | 4310 2264 90 |
| Hose set per m | 4380 0576 94 | 4380 0576 93 | 4380 0576 94 | 4380 0576 93 |
| Twist rod control Complete (1.1-2.0 m) | 4310 0774 91 | 4310 0774 91 | 4310 0774 91 | 4310 0774 91 |
| Extension set (1.1-1.9 m) | 4310 0780 91 | 4310 0780 91 | 4310 0780 91 | 4310 0780 91 |
| Articulating link | 4310 0876 91 | 4310 0876 91 | 4310 0876 91 | 4310 0876 91 |
| Chain collectors PVC for length of chain | | | | |
| – 4 m | 4310 0742 04 | | 4310 0742 04 | |
| – 7 m | 4310 0742 07 | 4310 2291 07 | 4310 0742 07 | 4310 2291 07 |
| –12 m | 4310 0742 12 | | 4310 0742 12 | |
| –18 m | 4310 0742 18 | | 4310 0742 18 | |
| –25 m | 4310 0742 25 | | 4310 0742 25 | |
| Chain collectors Steel for length of chain | | | | |
| –12 m | | 4310 2102 80 | | 4310 2102 80 |
| –18 m | | 4310 2109 80 | | 4310 2109 80 |
| Overload protection device LLA200 EX / 250 EX / 250-SR | 4310 0812 83 | | 4310 2233 90 | |
| LLA500 EX / 500-SR | 4310 0812 84 | | 4310 2233 91 | |
| LLA1000 U EX | 4310 0812 85 | | | |
| LLA1000 EX / 1250-SR / 2500 EX / 5000 EX | incl as standard | incl as standard | | incl as standard |
| Safety hooks, zinc plated | 4310 0739 01 | | | |
| Chain stop, zinc plated | 4310 0740 91 | 4310 2097 91 | | |
| Chain stop, stainless steel | | | 4310 2231 90 | 4310 2232 90 |

NOTE: For items specified per metre, the required length should be indicated by multiplying the Ordering No. by the required length, ie. to order 12 m of chain for an LLA250-SR the order should be **12 x 4310 2211 00**.

When ordering load chain, follow the recommendations on chain given in the technical data for LLA hoists.

OPTIONAL ACCESSORIES. Trolleys

| Designation | Ordering No. TLT1000/LLT1000-SR | Ordering No. LLT2500/-SR | Ordering No. TLT1000M/LLT1000(M)-SR | Ordering No. LLT2500M/M-SR | Ordering No. LLT5000M |
|---|------------------------------------|-----------------------------|--|-------------------------------|--------------------------|
| Suspension yoke | 4380 0640 02 | 4380 0608 00 | 4380 0640 02 | 4380 0608 00 | 4380 0628 00 |
| Zinc plated control chain per m | | | | 4310 0748 00 | 4310 0748 00 |
| Stainless steel control chain per m | | | | 4310 2221 00 | |
| 2 button pendant control Handle and actuator only | | | 4310 0835 91 | 4310 2300 90 | 4310 2300 90 |
| Hose kit per m | | | 4380 0576 92 | 4380 0576 91 | 4380 0576 91 |

Air hoist selection program

The fastest way to choose correct hoists and accessories is by using the Windows based computer program available on CD-rom.

Ordering No. 9833 1087 00



To order your hoist or trolley with accessories factory fitted, simply list all items required and add the

Ordering No. 8990 0001 00, to order.

EXAMPLE: To order a 500 kg hoist with motor driven trolley, four button five-metre long pendant control and a load chain for a ten-metre lift, send the following:

| Order to be sent | Comments |
|-------------------|---|
| 1 x 8451 1540 28 | LLA500 EX Hoist block |
| 11 x 4310 2293 00 | Load chain for hoist = Required height of lift + 0.5 m, (see technical data for LLA Hoists) |
| 1 x 8451 1520 14 | TLT1000M Motor driven trolley |
| 1 x 4310 2263 90 | 4 button handle + hoist actuator |
| 5 x 4380 0576 94 | Hose set for 4 button pendant control |
| 1 x 8990 0001 00 | Instruction to assemble above items |